

“L” SERIES HANDLE

Technical Information



SURE GRIP[™]
CONTROLS INC.

1949 Keating Cross Road, Saanichton, British Columbia, Canada V8M 2A4
Phone: 250-544-2207 Fax: 250-544-2279 www.suregripcontrols.com

"L" Series Handle Technical Information

1949 Keating Cross Road
Victoria, B.C. Canada V8M 2A4
Phone: (250) 544-2207

Fax: (250) 544-2279
Toll Free: 1-800-831-2278
www.suregripcontrols.com

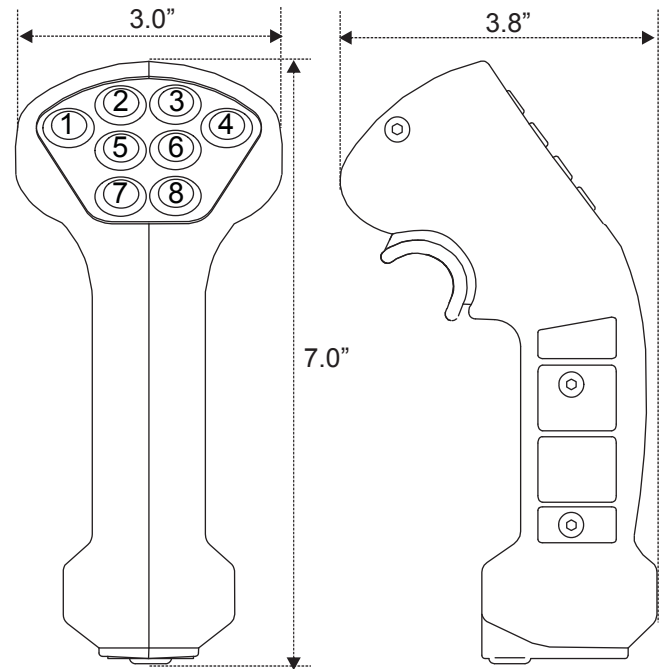
SURE GRIP
CONTROLS INC.

"L" Series Handle

Sure Grip "L" Series Control Grip is our Large handle commonly found on forestry, mining and construction machinery. The tough ABS housing combined with a comfortable shape creates a rugged lightweight control handle that has become very popular for extreme duty applications requiring up to 10 switches. We also have a keypad that can be installed on the left or right side of the grip for an additional 10 switches.

The stock handle configurations come with 2, 4, 6 or 8 thumb switches and a single or double acting trigger. The standard Sure Grip switches are covered with a tough, flexible membrane overlay that protects the switches from dirt and moisture.

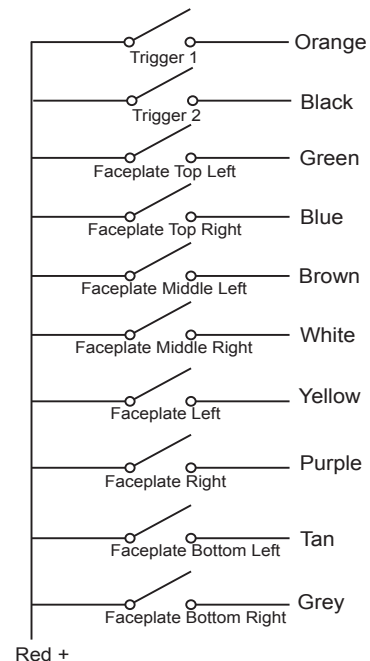
These grips are also very customizable and can be supplied with a deadman lever, toggle switches, push on-push off maintained switches, proportional modules, LED's and rocker switches. The "L" Series grips can also be installed on all of our electronic joysticks..



"L" Handle Specifications

Dimensions:	7" x 3" x 2" wide
Configuration Options:	Custom configurable - refer to page 4 for available options. Call factory for further configurations.
Weight:	375 grams (9 oz.)
Overlay:	Embossed .007" polyester
Case:	1/8" thick, heavy wall ABS, available in grey or black
Mounting Pin:	1" diameter, 6061 aluminum
Wire:	Standard 10' @ 20 or 22 gauge
Switch Current Rating:	5 amps (Standard silver contact)
Switch Life:	10 million mechanical 2.5 million @ 500 mA DC (typical)

"L" Handle Typical Wiring



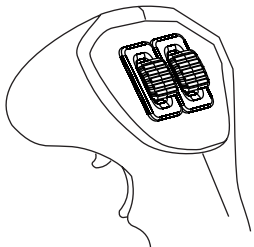
"L" Series Handle Technical Information

1949 Keating Cross Road
Victoria, B.C. Canada V8M 2A4
Phone: (250) 544-2207

Fax: (250) 544-2279
Toll Free: 1-800-831-2278
www.suregripcontrols.com

SURE GRIP
CONTROLS INC.

"L" Handle Faceplate Configuration Examples



"L" Series handle with
Dual Slider Modules



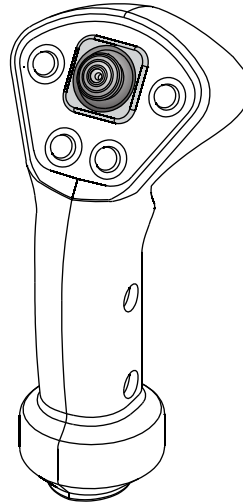
"L" Series handle with
2 - Flex Button Actuators
4 on/off switches



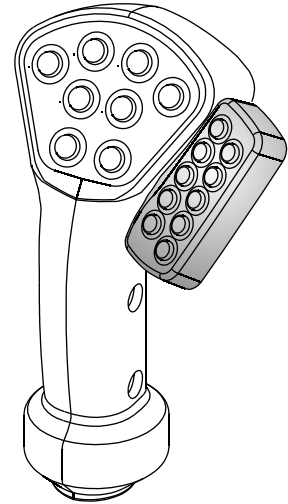
"L" Series handle with
2 LED / 2 Toggle Switches
2 on/off switches



"L" Series handle with
1 Rotary Potentiometer
5 on/off switches



"L" Series handle with
1 Micro Joystick
4 on/off switches



"L" Series handle with
1 Left Hand Keypad (10 buttons)
8 on/off switches

Refer to the Customized Handle Guide (Doc. #420.0032) for complete ordering details.

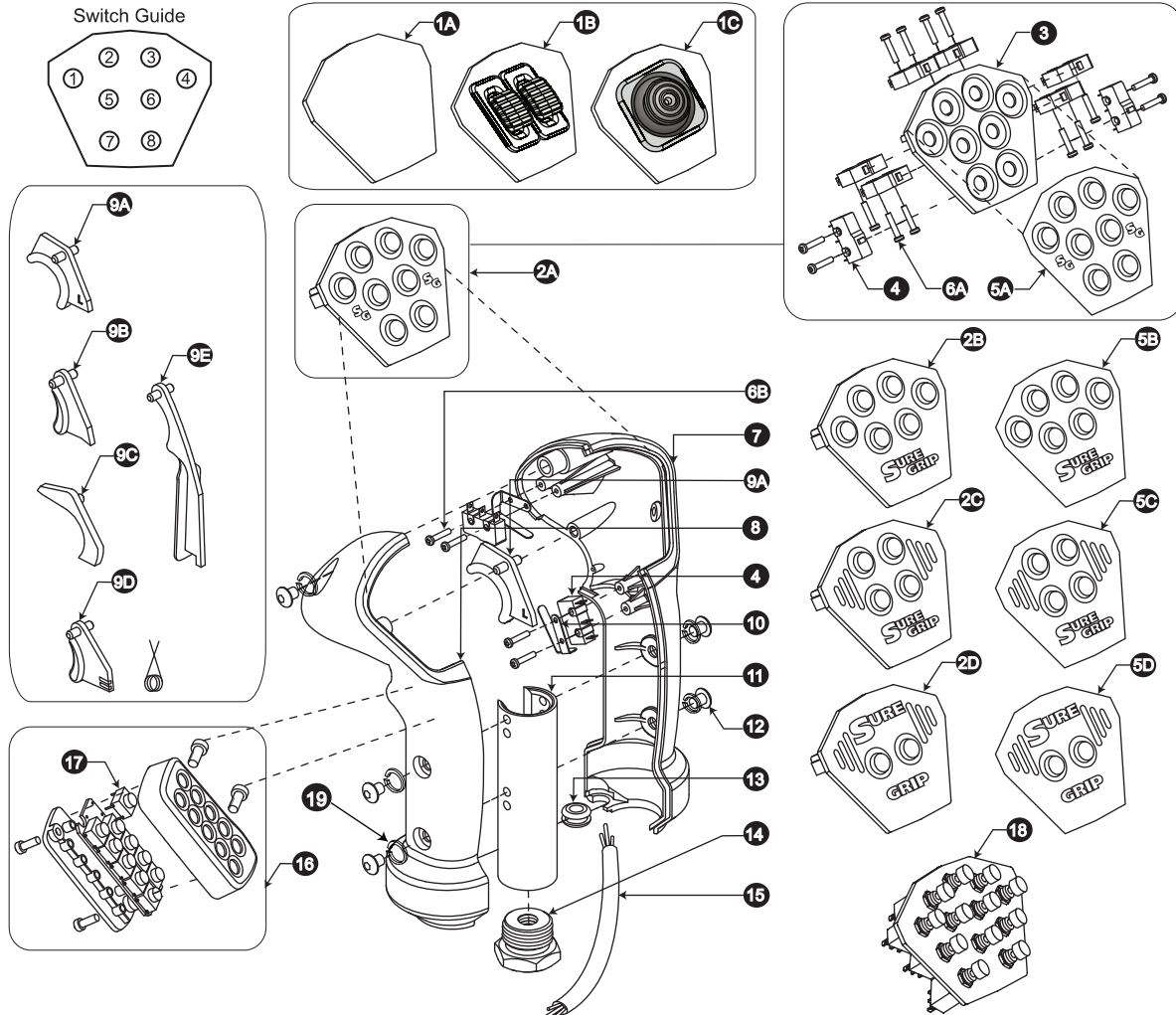
"L" Series Handle Technical Information

1949 Keating Cross Road
Victoria, B.C. Canada V8M 2A4
Phone: (250) 544-2207

Fax: (250) 544-2279
Toll Free: 1-800-831-2278
www.suregripcontrols.com

SURE GRIP™
CONTROLS INC.

"L" Handle Part List



FLG	PART#	DESCRIPTION	FLG	PART#	DESCRIPTION
1A	L-FP-00	"L" Blank Faceplate	7 8	L-HLR-Kit-B	"L" Handle Case Upgrade Kit Assy. - Black(Grey)
1B	L-FP-E-??	"L" Series Dual Slider Module (Call Factory)	9A	L-TR-02	"L" Double Trigger
1C	L-FP-E-J	"L" Series Dual Axis Micro Joystick (Call Factory)	9B	L-TR-01	"L" Single Trigger
2A	L-FP-A8	"L" 8 Switch Pack Assy.	9C	L-TR-00	"L" Trigger Insert
2B	L-FP-A6	"L" 6 Switch Pack Assy.	9D	TR-P1-A	Proportional Trigger/Spring Assy.
2C	L-FP-A4	"L" 4 Switch Pack Assy.	9E	TR-D1-G	Deadman Trigger Lever - Grey (Black)
2D	L-FP-A2	"L" 2 Switch Pack Assy.	10	LS-00	Leaf Spring for Trigger
3	L-FP-01	"L" Series Empty Faceplate	11	PN-03	Mounting Pin "L/S"
4	SW-00	Handle Switch, L/S	12	SC-02SS	10-32 x 7/16" Capscrew - Button Head
5A	L-ME-A8	"L" 8 Button Overlay	13	GR-01	3/8" x 1/4" Grommet
5B	L-ME-A6	"L" 6 Button Overlay	14	BU-00	Adapter Bushing - 1/4" Hole (See Page 15)
5C	L-ME-A4	"L" 4 Button Overlay	15	L2-M2-W	"L" Handle 2 Button Faceplate Wire Harness
5D	L-ME-A2	"L" 2 Button Overlay		L2-M4-W	"L" Handle 4 Button Faceplate Wire Harness
6A	SC-03	2 x 7/16" Tapping Screw - Pan Head (Faceplate)		L2-M6-W	"L" Handle 6 Button Faceplate Wire Harness
6B	SC-21	2 x 9/16" Tapping Screw - Pan Head (Trigger)		L2-M8-W	"L" Handle 8 Button Faceplate Wire Harness
7	L-HL-R-G	"L" Handle Case Right - Grey (Black)	16	KP-10L1	Keypad 10 Button, (Fits Left Handle)
		(L-HL-02 Handle Case Right - Old Style)		KP-10R1	Keypad 10 button, (Fits Right Handle)
8	L-HL-L-G	"L" Handle Case Left - Grey (Black)		SW-07	Key Pad Switch
		(L-HL-01 Handle Case Left - Old Style)	17	L-FP-A-B12	12 button "L" series faceplate assembly
			18	SC-20	10-32 Lockwasher

"L" Series Handle

Technical Information

"L" Handle Overlay Dimensions (Inches)

